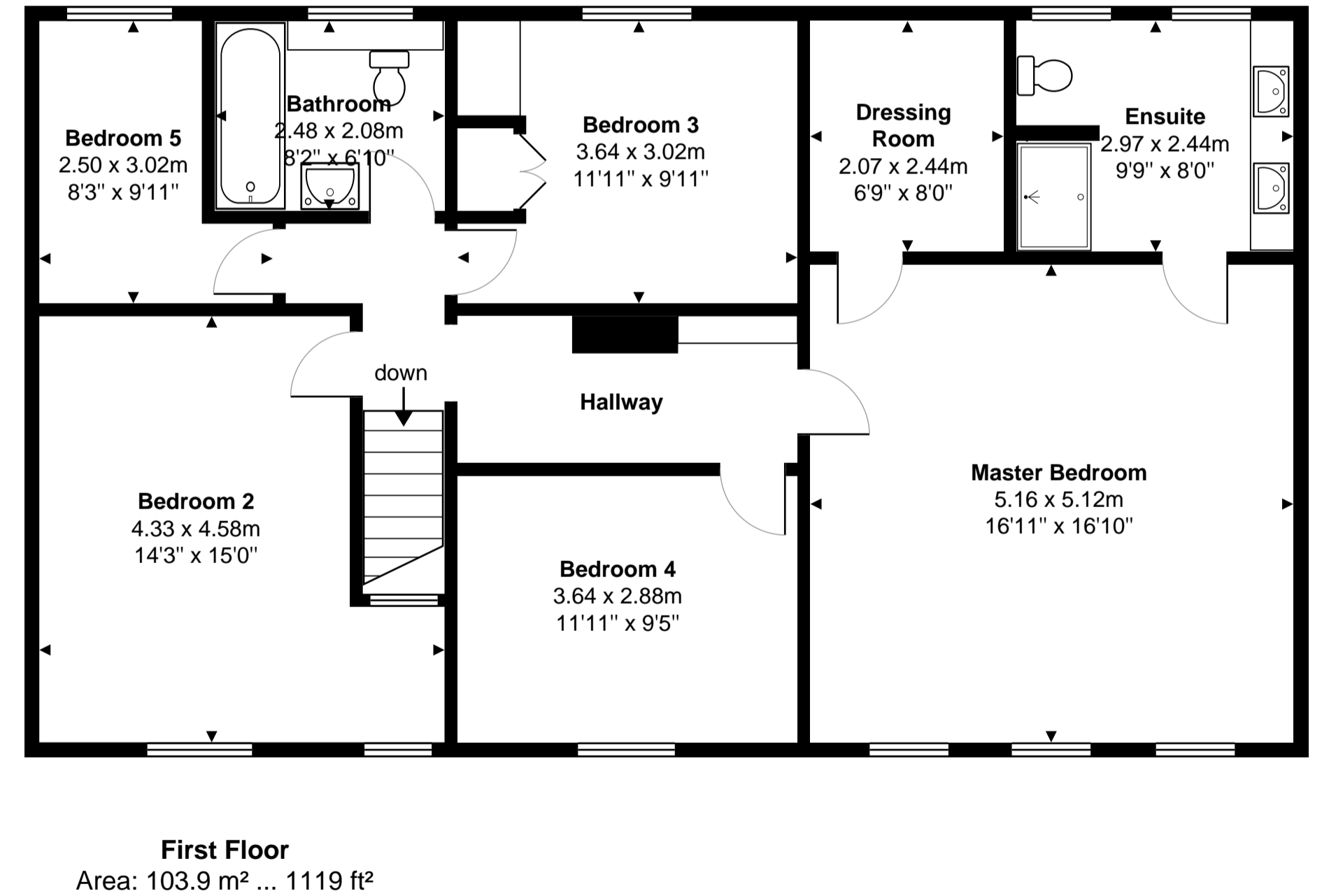
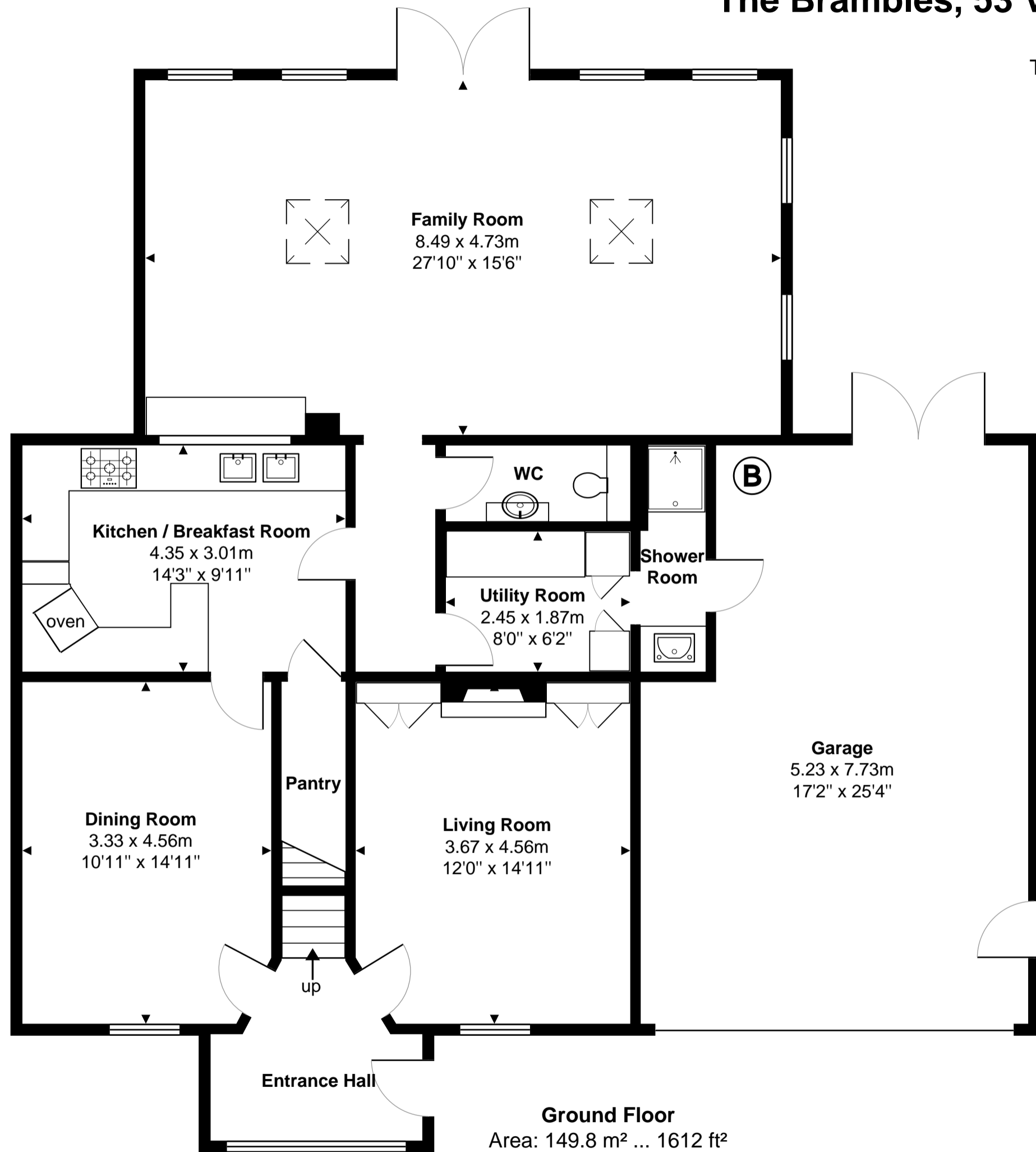


# The Brambles, 53 Victoria Road, Mortimer, RG7 3SL

Total Area: 253.7 m<sup>2</sup> ... 2731 ft<sup>2</sup>



Whilst every attempt has been made to ensure the accuracy of the floor plans contained here, measurements of doors, windows and rooms are approximate and no responsibility is taken for any error, omission or mis-statement. These plans are for representation purposes only.