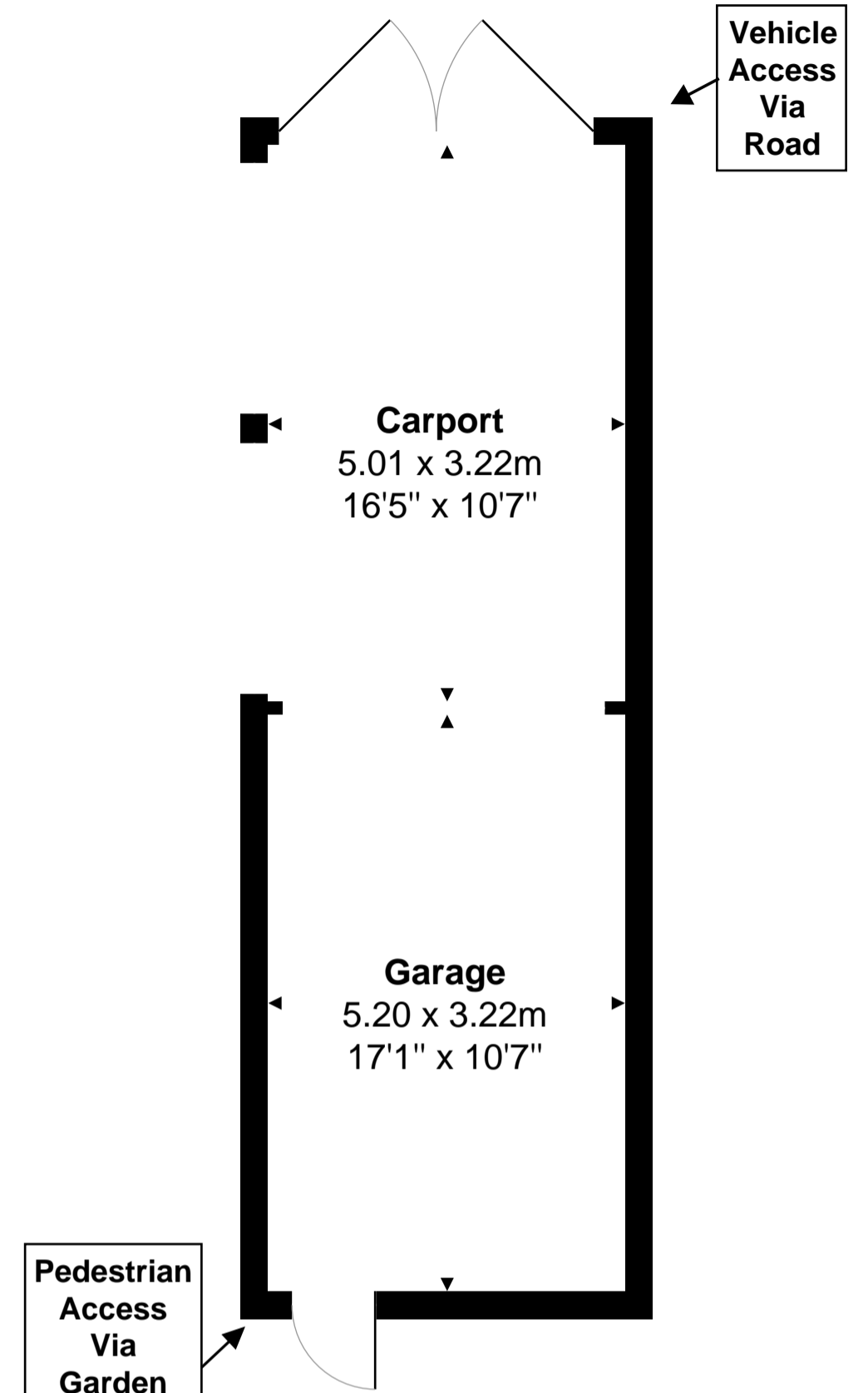
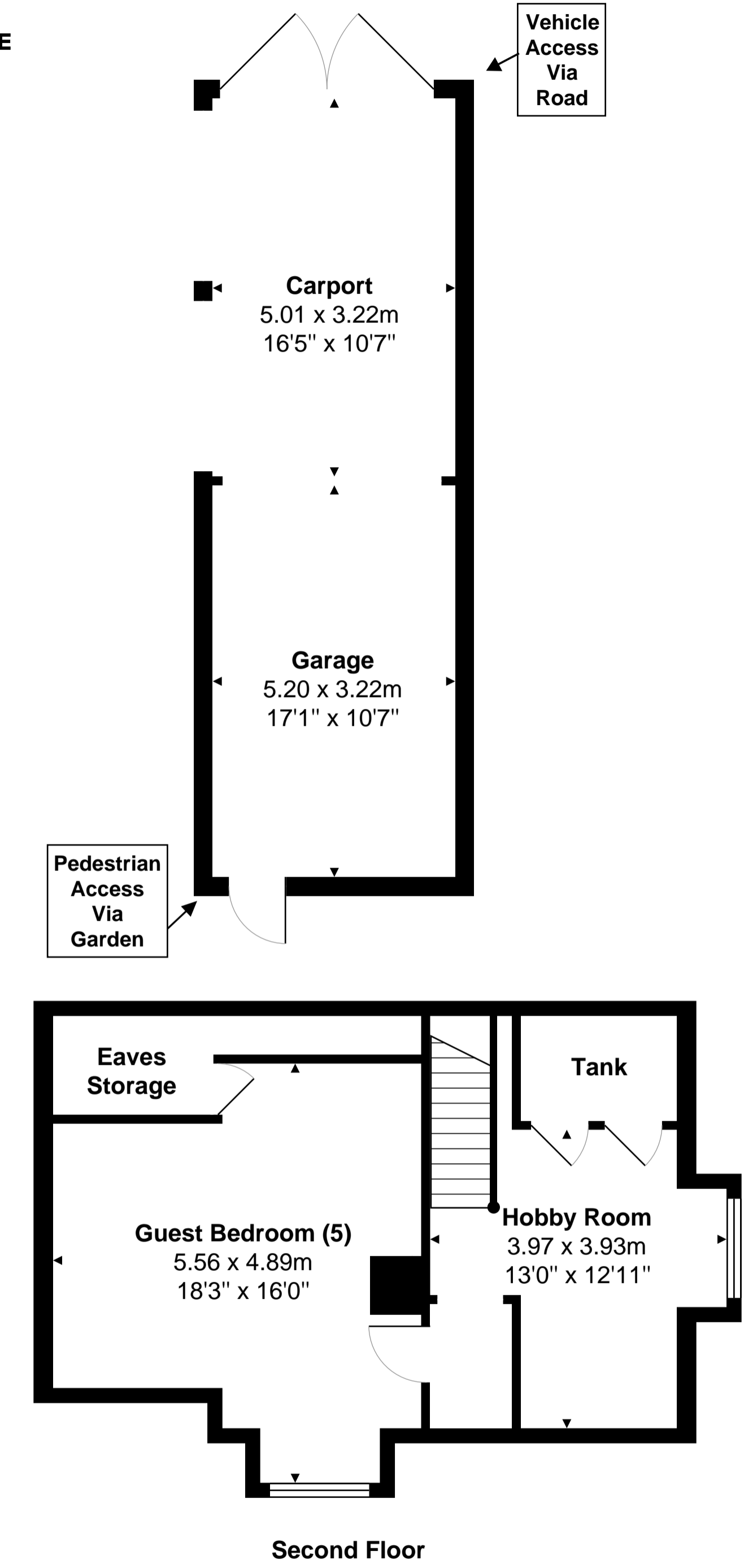
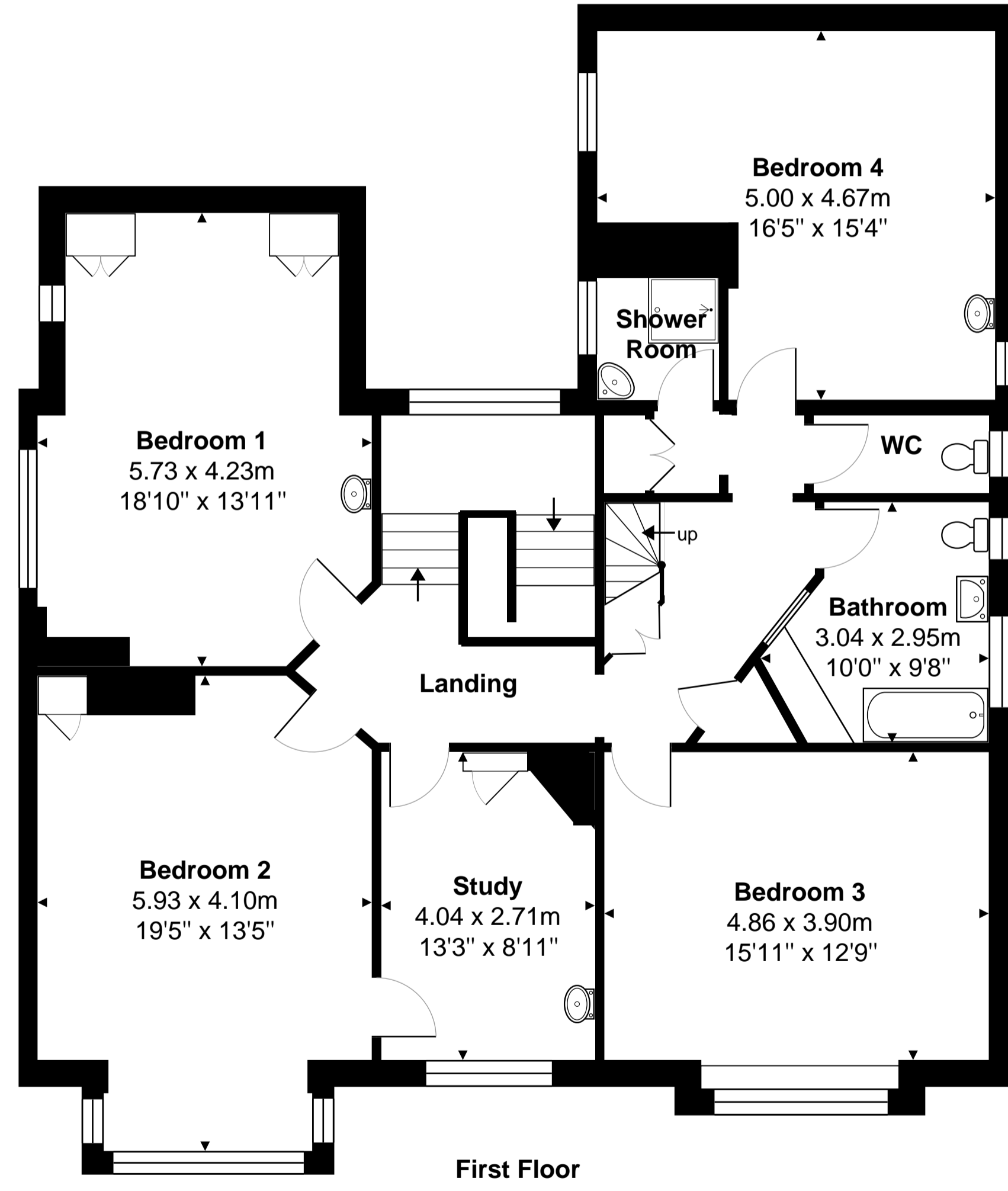
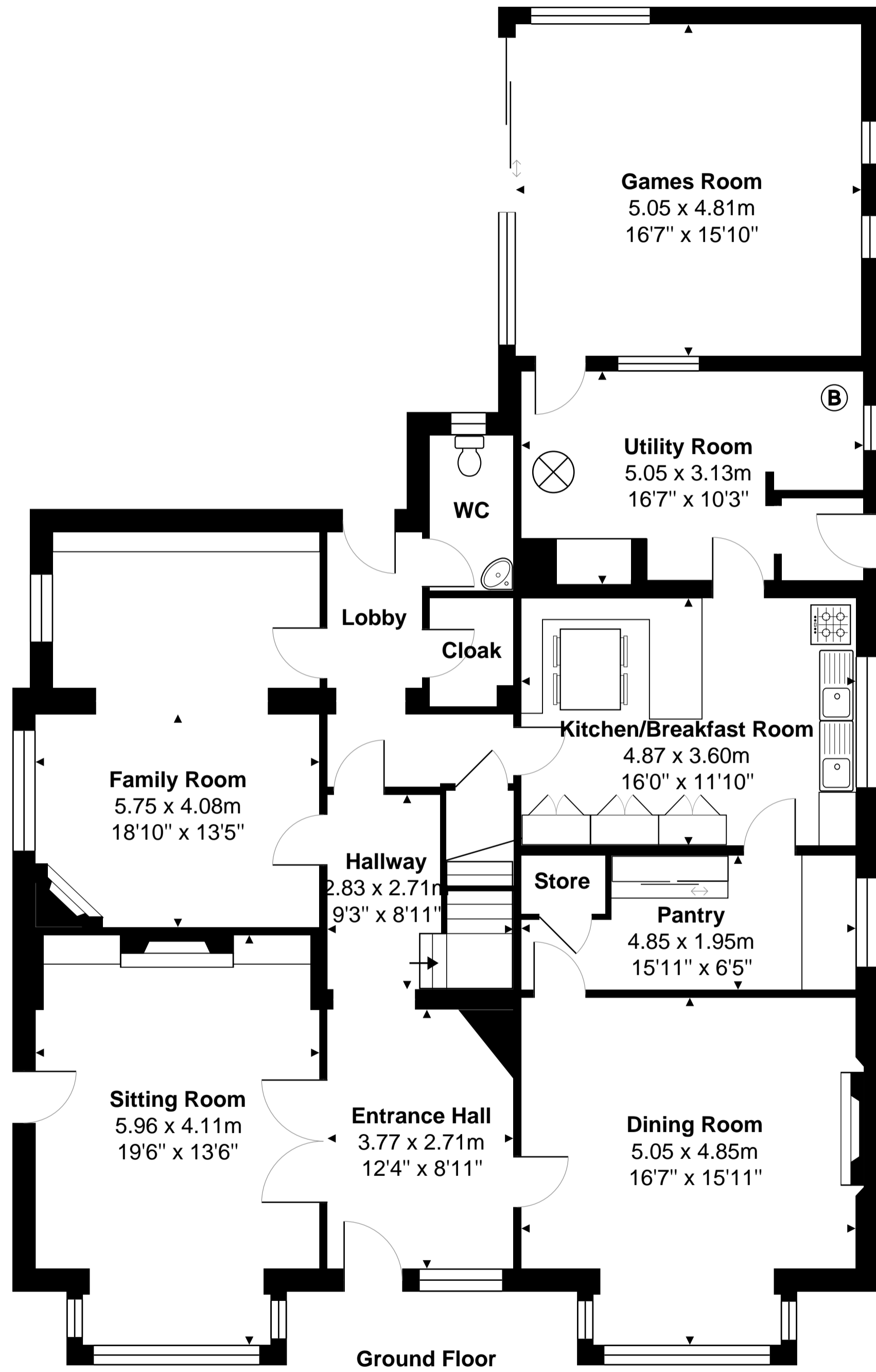
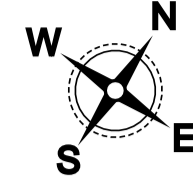


Elmhurst Road, Reading, RG1 5HY

Approx. Total Area: 349.5 m² ... 3762 ft² (excluding eaves storage, garage, carport)



Whilst every attempt has been made to ensure the accuracy of the floorplans contained here, measurements of doors, windows and rooms are approximate and no responsibility is taken for any error, omission or mis-statement. These plans are for representation purposes only.