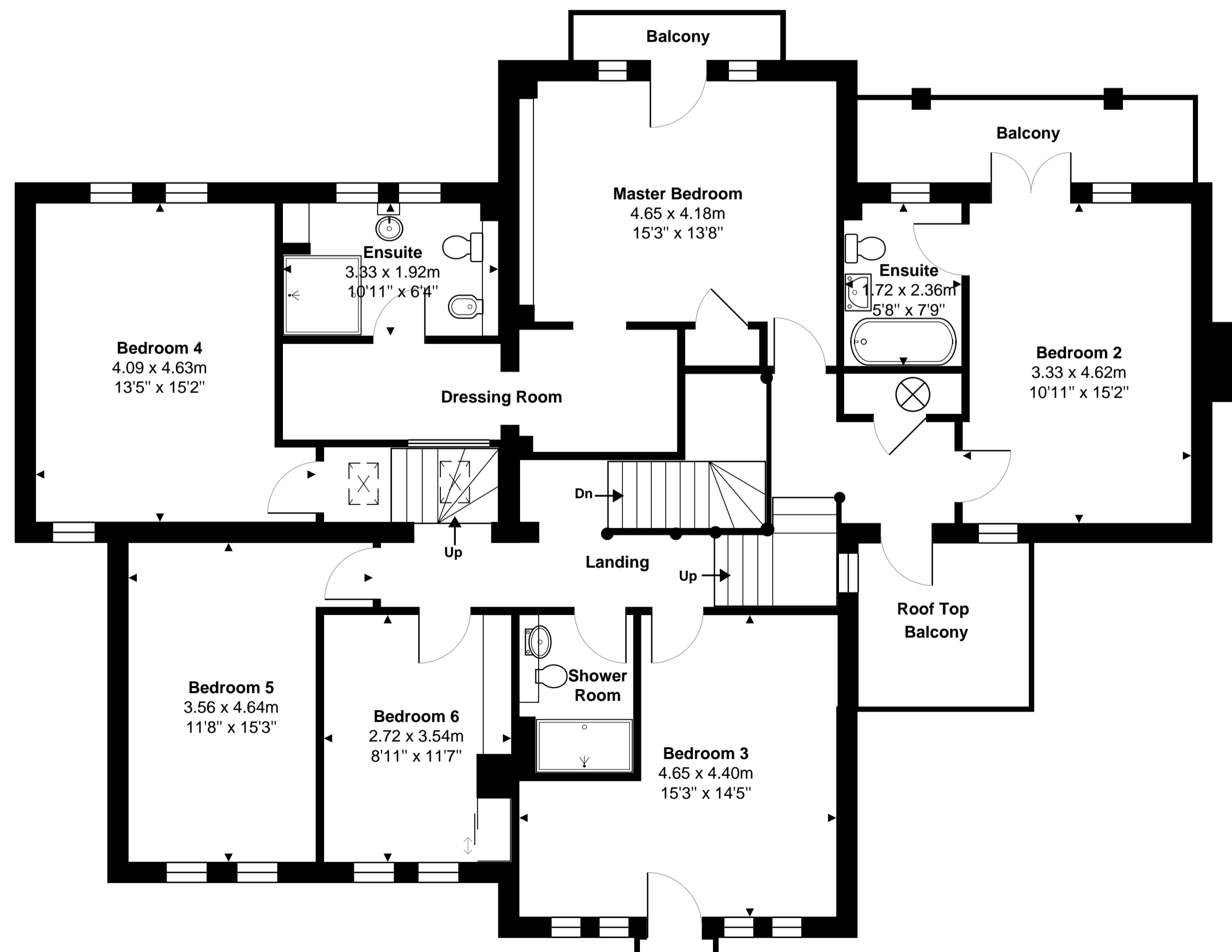
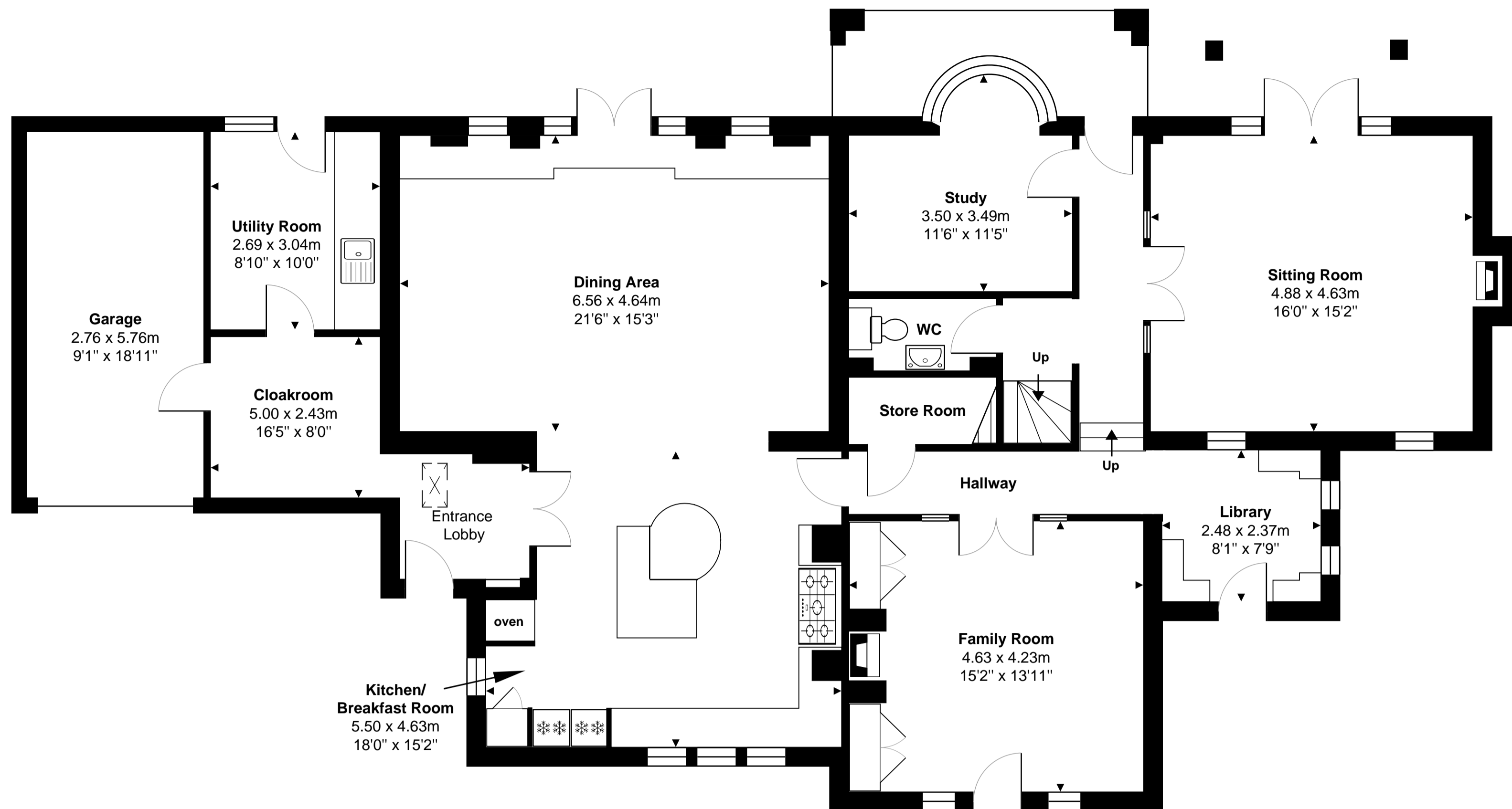
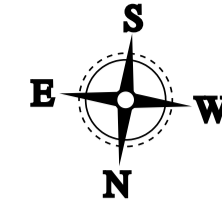


Chervil Way, Burghfield Common, RG7 3YX

Total Area: 303.9 m² ... 3271 ft² (excluding garage, balcony)



Whilst every attempt has been made to ensure the accuracy of the floor plans contained here, measurements of doors, windows and rooms are approximate and no responsibility is taken for any error, omission or mis-statement. These plans are for representation purposes only.