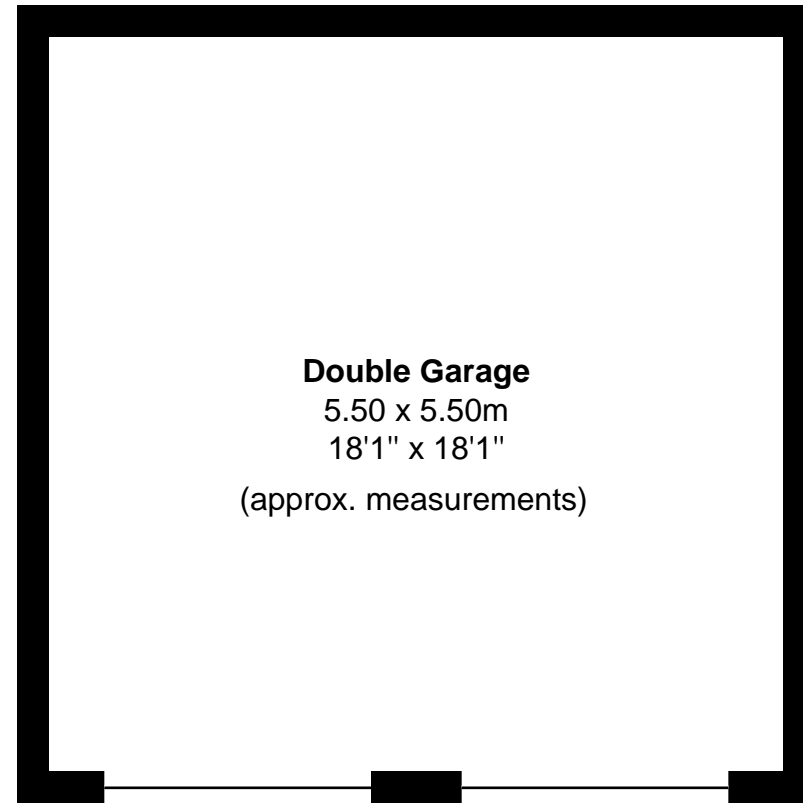
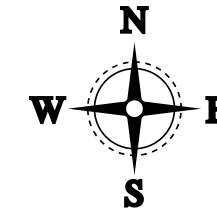


Little Court Barn, Sonning, RG4 6TH

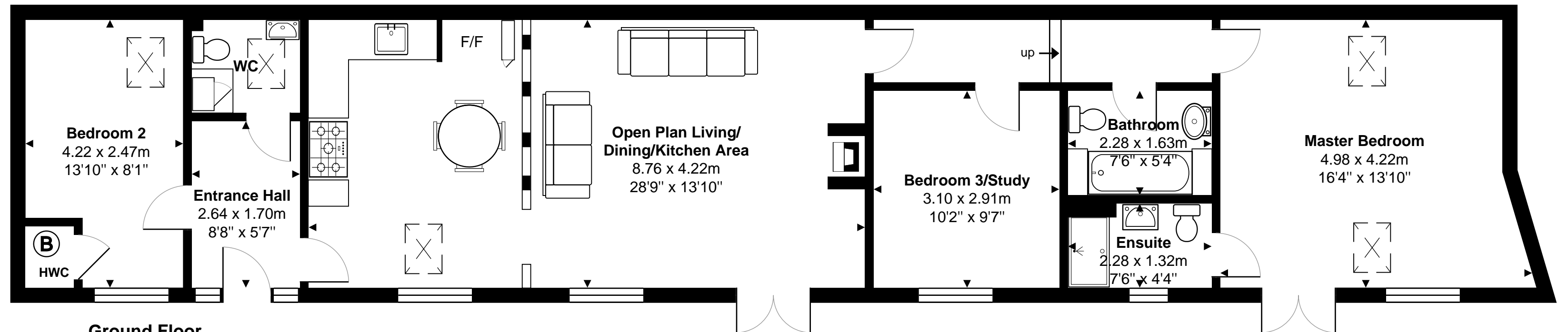
Total Area: 98.6 m² ... 1062 ft² (excluding double garage)

Garage :- 30 sq m/ 323 sq ft



Double Garage
5.50 x 5.50m
18'1" x 18'1"
(approx. measurements)

Garage (Not in correct location)



Ground Floor

Area: 98.6 m² ... 1062 ft²

Whilst every attempt has been made to ensure the accuracy of the floor plans contained here, measurements of doors, windows and rooms are approximate and no responsibility is taken for any error, omission or mis-statement. These plans are for representation purposes only.