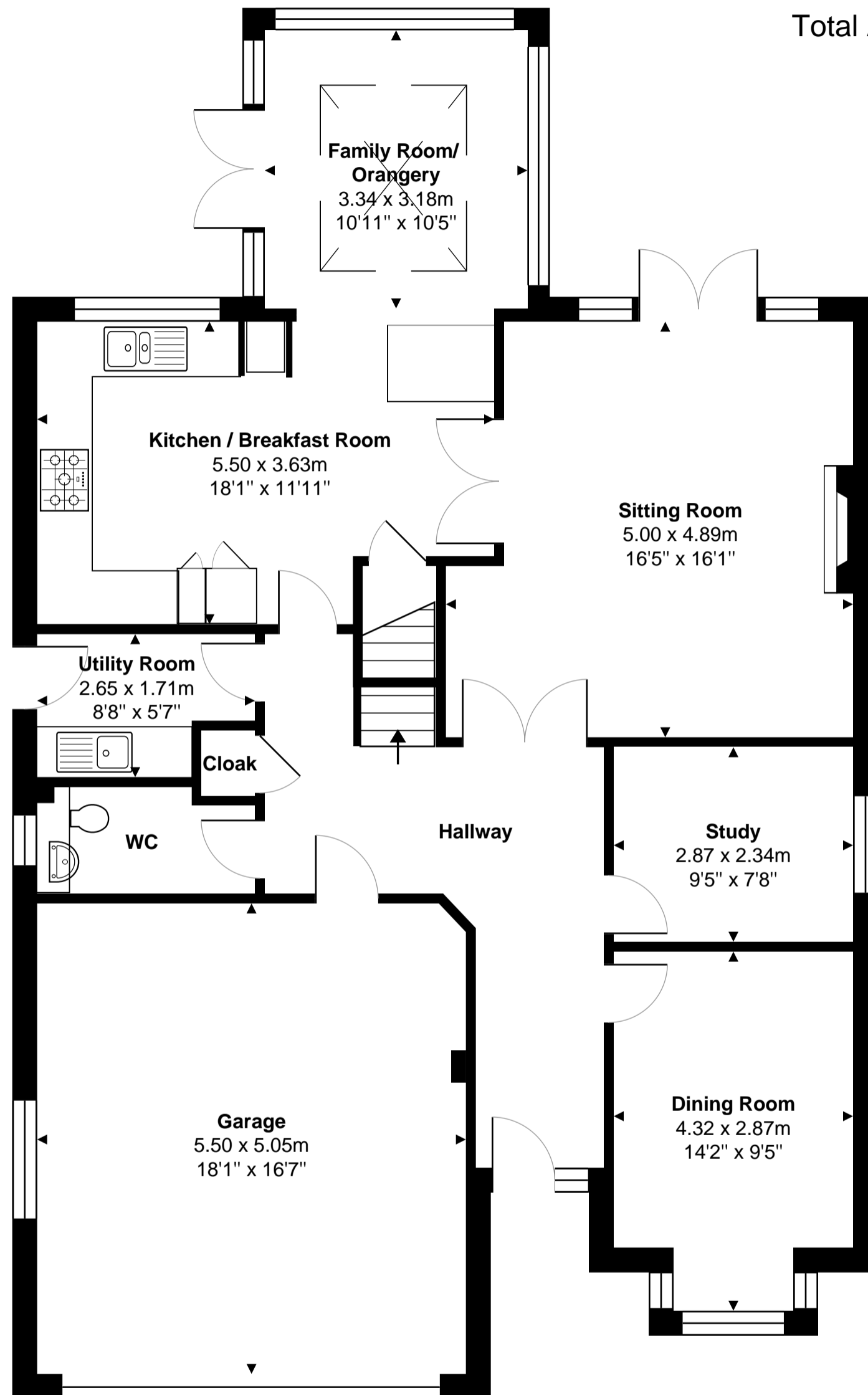
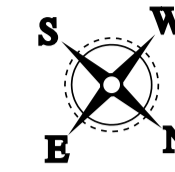
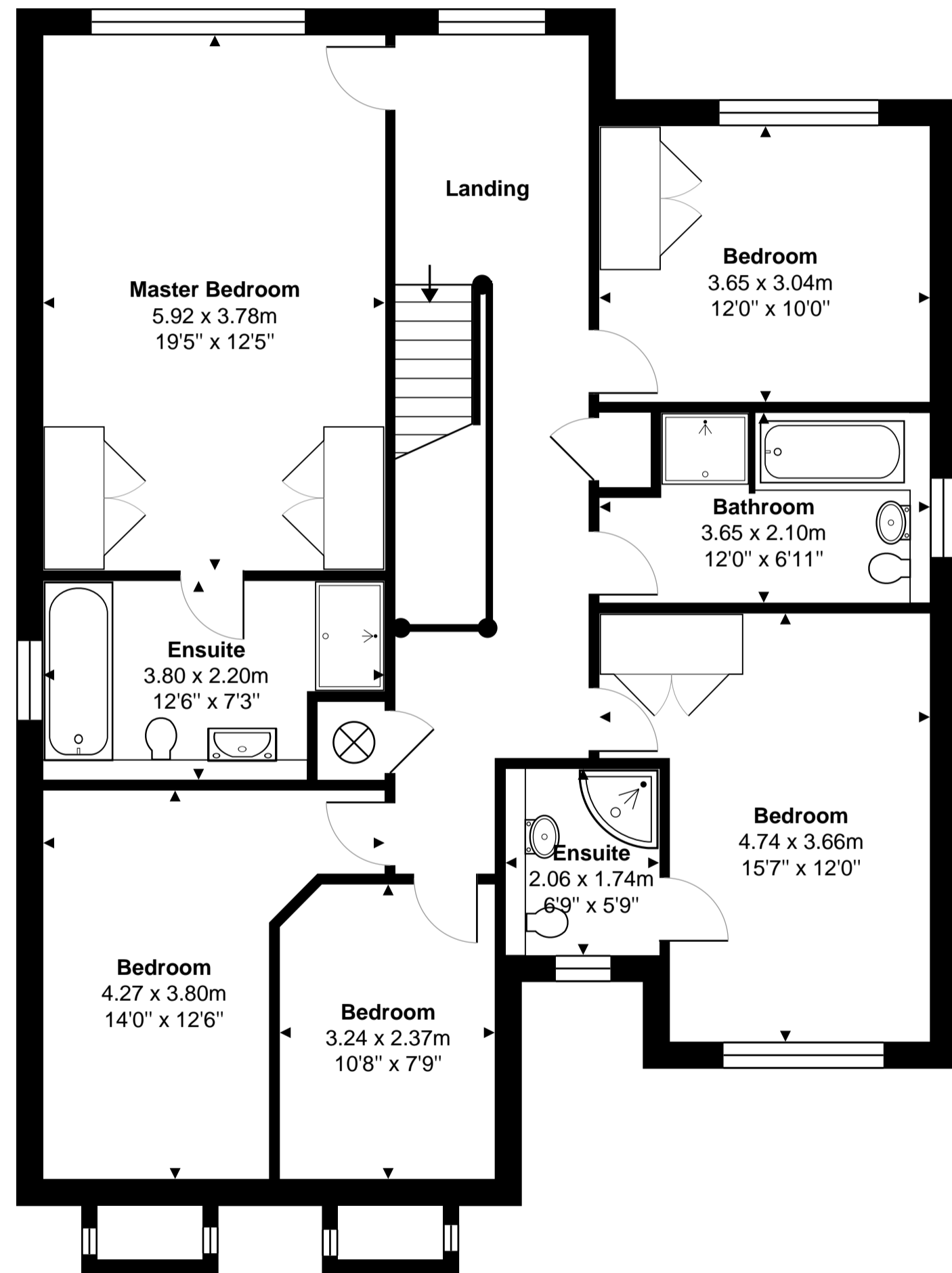


# 28a Northcourt Avenue, Reading, RG2 7HA

Total Area: 241.1 m<sup>2</sup> ... 2595 ft<sup>2</sup>



**Ground Floor**  
Area: 127.7 m<sup>2</sup> ... 1375 ft<sup>2</sup>



**First Floor**  
Area: 113.4 m<sup>2</sup> ... 1220 ft<sup>2</sup>

Whilst every attempt has been made to ensure the accuracy of the floor plans contained here, measurements of doors, windows and rooms are approximate and no responsibility is taken for any error, omission or mis-statement. These plans are for representation purposes only.