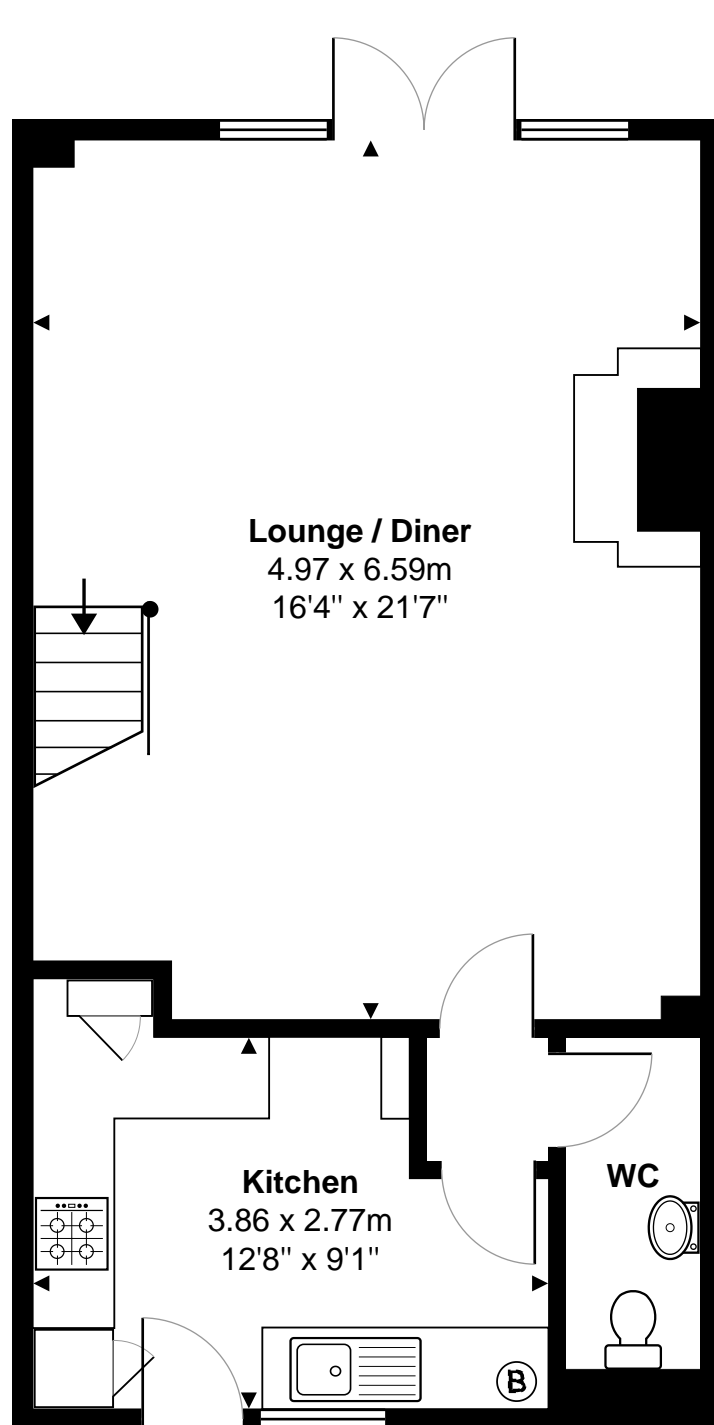


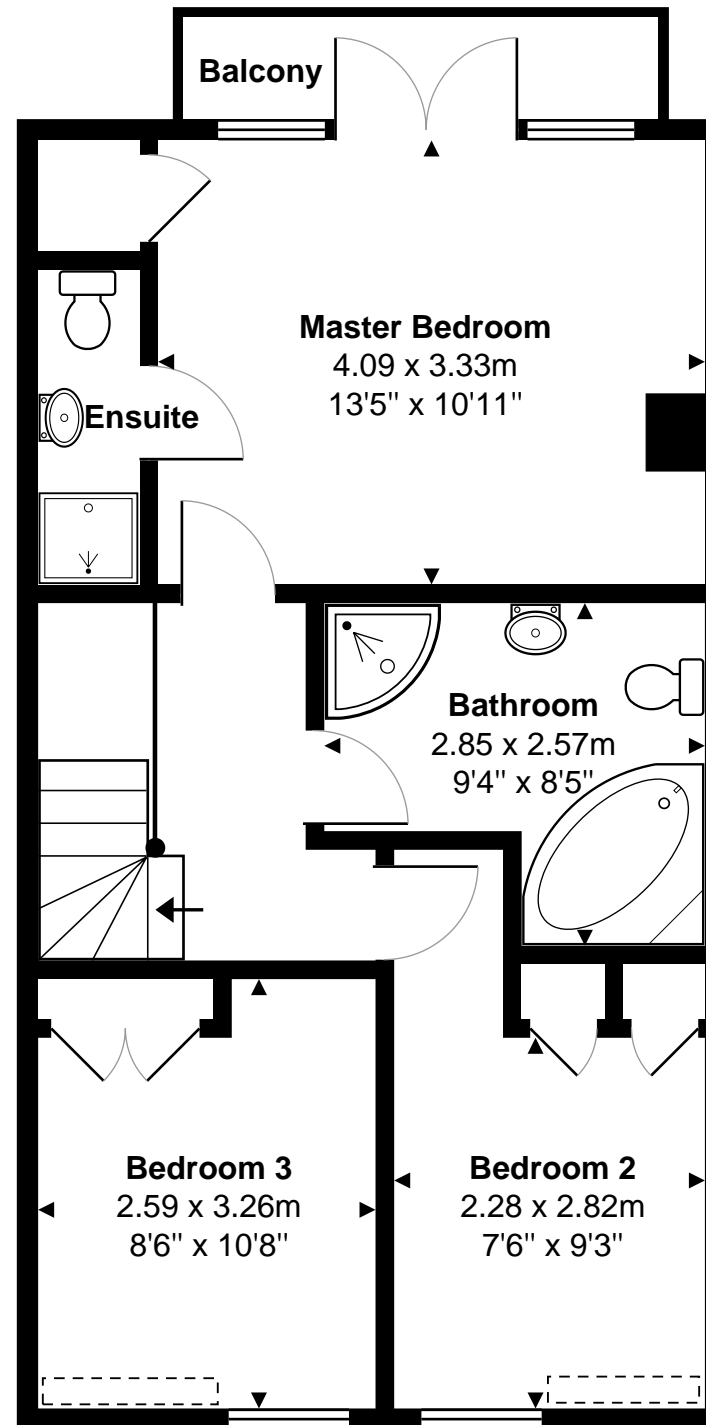
15 The Brookmill, Coley Park Farm, Reading, RG1 6DD

Total Area: 107.7 m² ... 1159 ft² (excluding balcony)



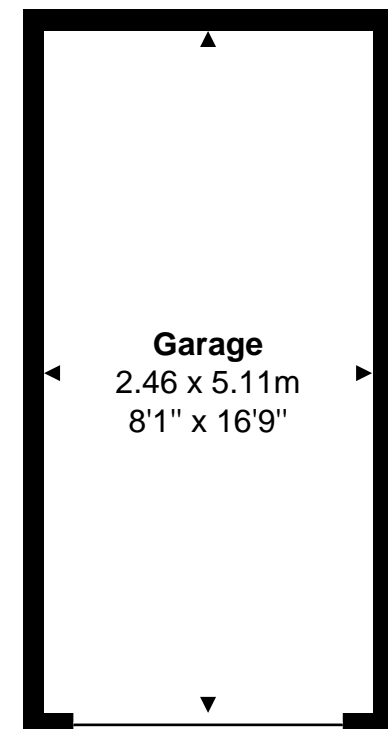
Ground Floor

Area: 47.6 m² ... 512 ft²



First Floor

Area: 47.5 m² ... 512 ft²



Garage
2.46 x 5.11m
8'1" x 16'9"

Whilst every attempt has been made to ensure the accuracy of the floor plans contained here, measurements of doors, windows and rooms are approximate and no responsibility is taken for any error, omission or mis-statement. These plans are for representation purposes only.