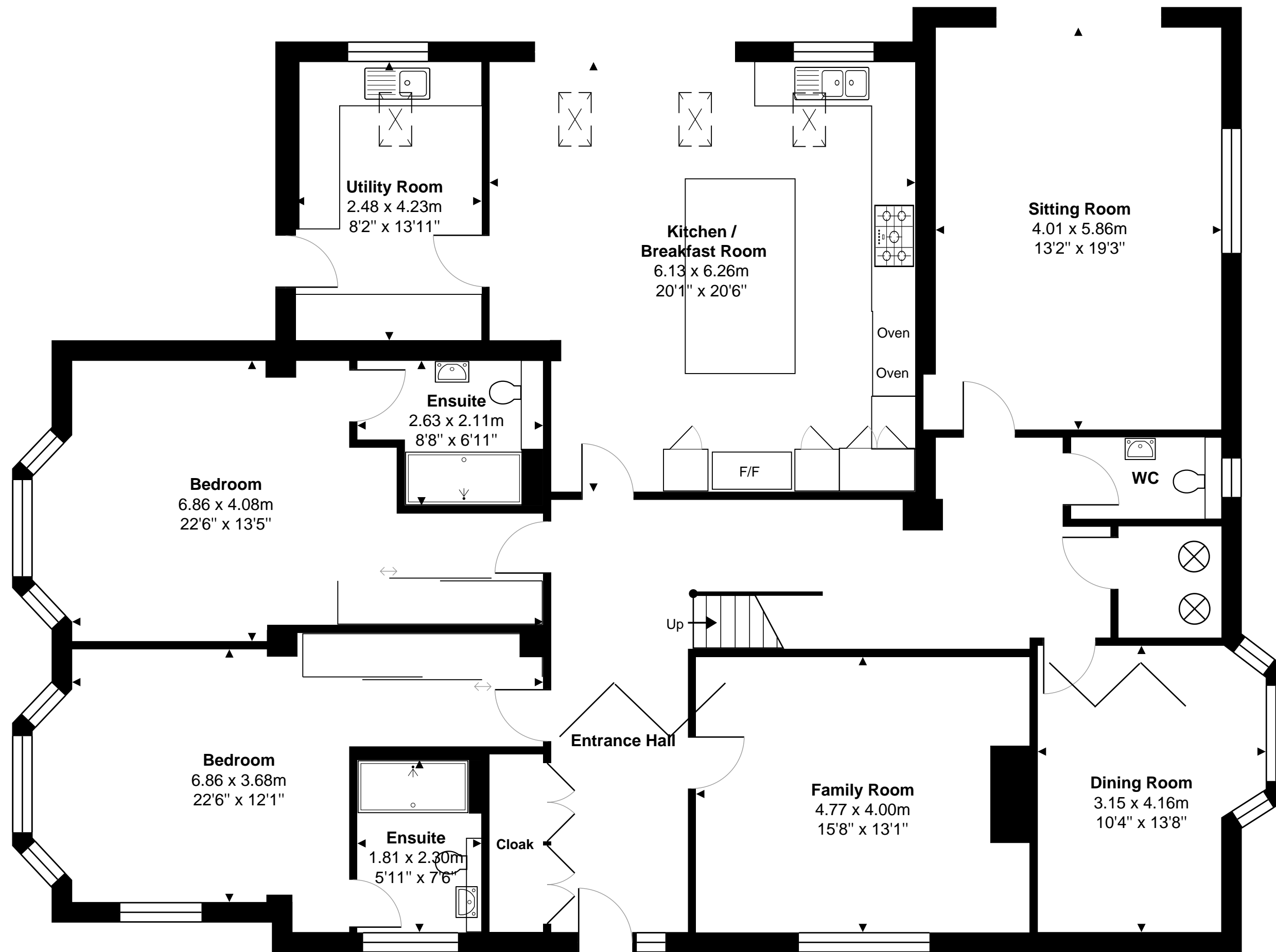
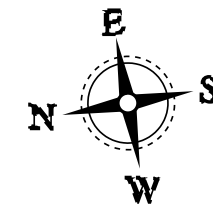
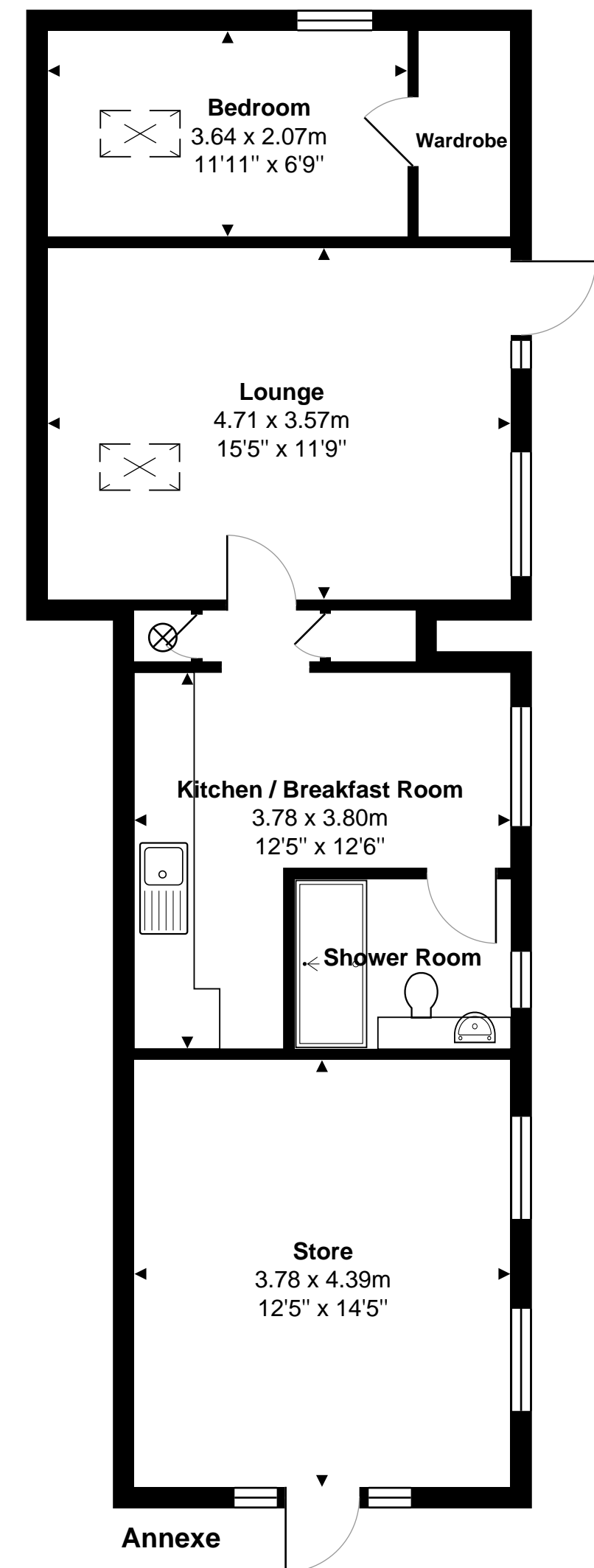


144 Wargrave Road, Twyford, RG10 9PN

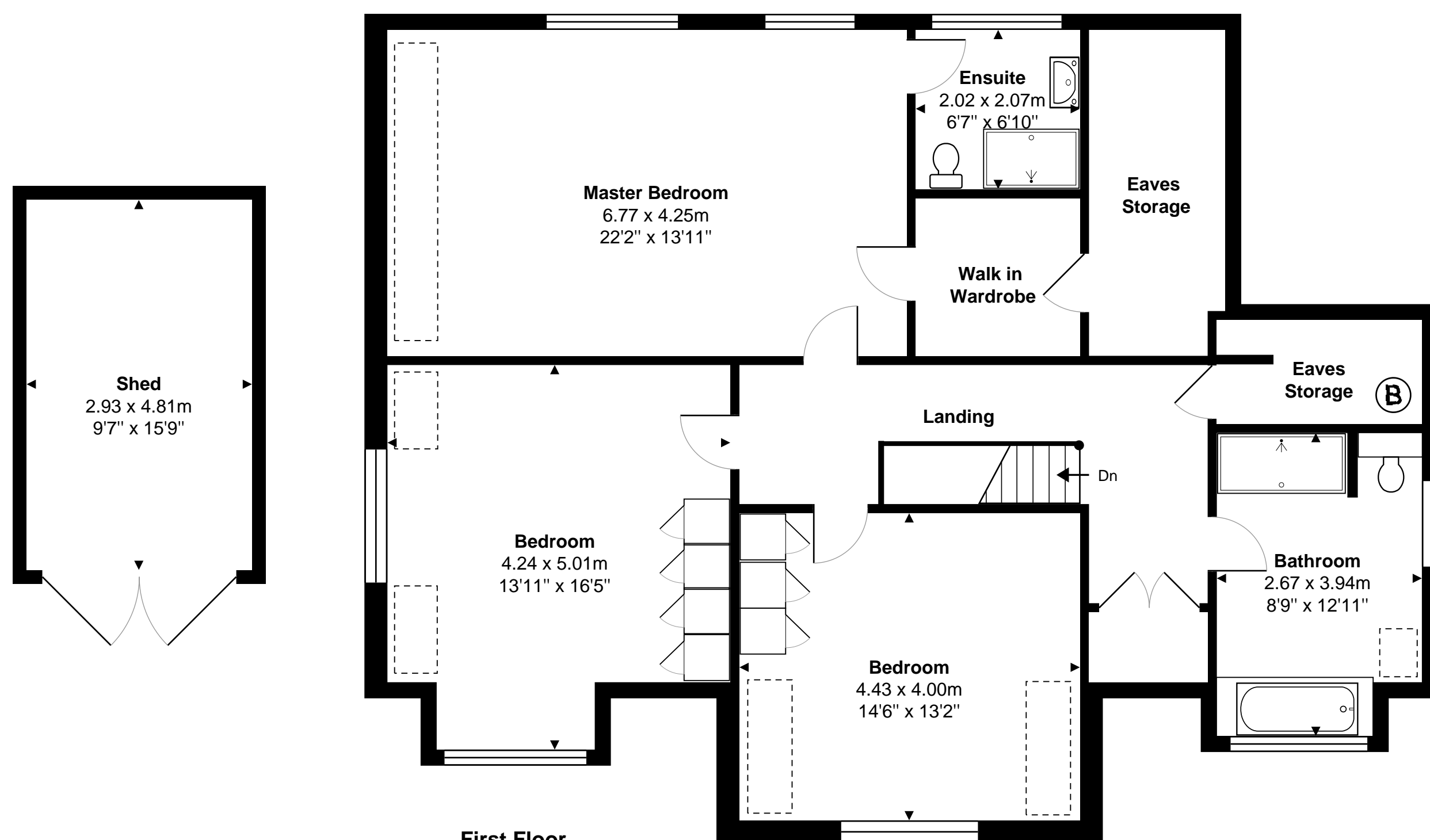
Total Area: 368.7 m² ... 3969 ft² (excluding eaves storage, shed, workshop)



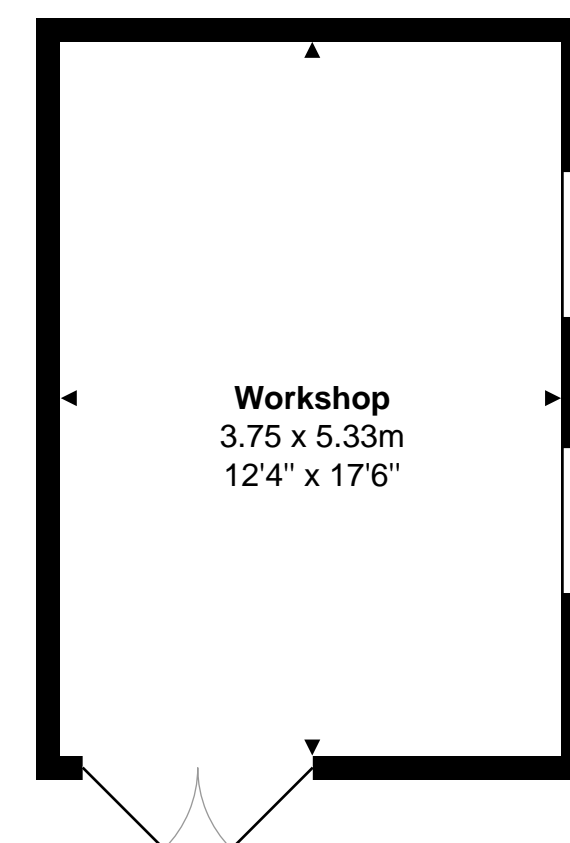
Ground Floor
Area: 202.5 m² ... 2180 ft²



Annexe



First Floor
Area: 105.1 m² ... 1132 ft²



Workshop

Whilst every attempt has been made to ensure the accuracy of the floor plans contained here, measurements of doors, windows and rooms are approximate and no responsibility is taken for any error, omission or mis-statement. These plans are for representation purposes only.